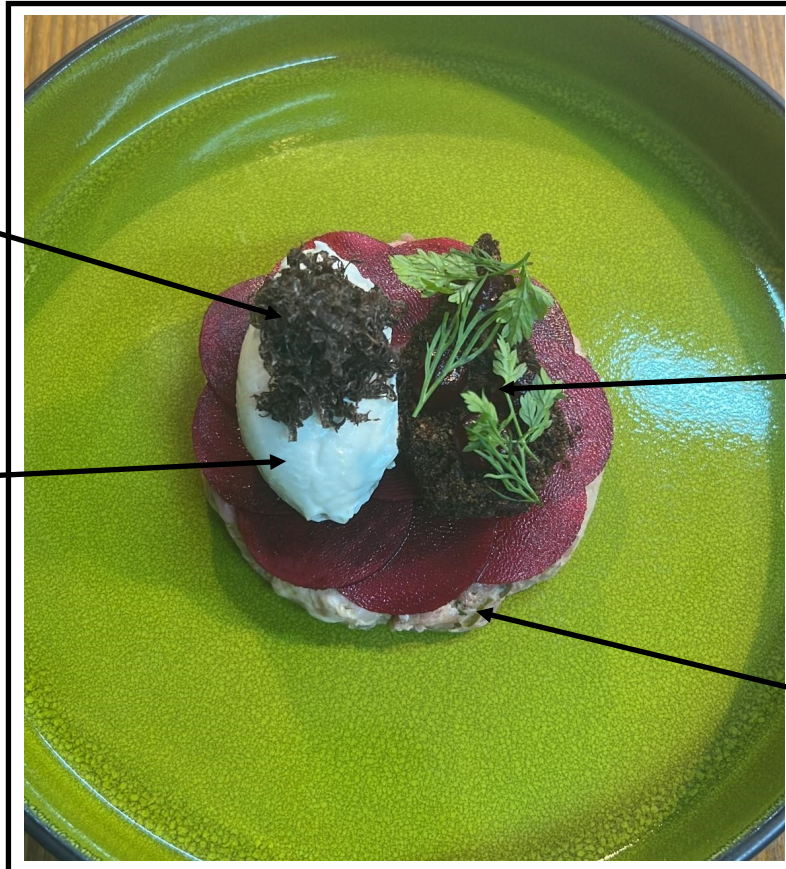


## CONFIT CHICKEN AND HAM HOCK

Dolcelatte, Crapaudine Beetroot, Wild Rice, Truffle

SHAVED TRUFFLE

DOLCELATTE  
MOUSSECRAPUDINE BEETROOT  
& WILD RICECONFIT CHICKEN  
& HAM HOCK

## ALLERGENS

MILK / MUSTARD / SULPHUR DIOXIDE

## POINTS OF NOTE

- Suffolk White Chickens from Sutton-Hoo, slow grown, high welfare, free-range chicken
- Dolcelatte (sweet milk) is a Italian soft and creamy blue cheese
- Also known as 'Toad Beetroot', this variety is the oldest still in existence (estimated at 1000 years!). Crapaudine translates as female toad in french. the skin is very rough and cracked, the carrot-shaped roots are extremely sweet and very dark